

why pipelines matter

The nation's pipelines are the arteries of our national energy supply. Pipelines are essential to our transportation system and our way of life.

- Nationally, there are 2.3 million miles of underground pipeline systems transporting petroleum products safely and economically.
- Pipelines transporting petroleum and natural gas products are an integral part of the infrastructure of all communities.
- Truck and rail transportation cannot equal the safety record or efficiency of pipeline transportation.

products transported in our pipelines

Product	Leak Type	Vapors
Carbon dioxide (CO₂)	Gas	Vapors from liquefied gas are initially heavier than air and spread along ground.
Health hazards: Product is a simple asphyxiant and nonflammable. Vapors may cause dizziness or asphyxiation without warning and may be toxic if inhaled. Contact with gas or liquefied gas may cause burns, severe injury and/or frostbite.		
Highly volatile liquids	Gas	Initially heavier than air, spread along ground and may travel to source of ignition and flash back. Product is colorless, tasteless and odorless.
Health hazards: Will be easily ignited by heat, sparks or flames and will form explosive mixtures with air. Vapors may cause dizziness or asphyxiation without warning and may be toxic if inhaled at high concentrations. Contact with gas or liquefied gas may cause burns, severe injury or frostbite. Fire may produce irritating and/or toxic gases.		
Natural gas	Gas	Lighter than air and will generally rise and dissipate. May gather in a confined space and travel to a source of ignition.
Health hazards: Will be easily ignited by heat, sparks or flames and will form explosive mixtures with air. Vapors may cause dizziness or asphyxiation without warning and may be toxic if inhaled at high concentrations. Contact with gas may cause burns or severe injury.		
Hazardous liquids (such as: crude oil and other refined products)	Liquid	Initially heavier than air and spread along ground and collect in low or confined areas. Vapors may travel to source of ignition and flash back. Explosion hazards indoors, outdoors or in sewers.
Health hazards: Inhalation or contact with material may irritate or burn skin and eyes. Fire may produce irritating, corrosive and/or toxic gases. Vapors may cause dizziness or suffocation. Runoff from fire control or dilution water may cause pollution.		

importance of urban planning

Development has placed many residential communities, businesses, schools, churches and shopping complexes closer to our nation's pipeline systems. That's why pipeline safety in our communities involves teamwork between pipeline operating companies, urban planning departments and real estate development companies. When planning any activity that disturbs the earth, please contact the National One-Call center at 811 and engage Chevron Pipe Line Company early.

 **Chevron Pipe Line Company**
1400 Smith Street
Houston, TX 77002
Attn: DOT Specialist
www.chevronpipeline.com

 **Know what's below.
Call 811 before you dig.**



 **CGA**
Common Ground Alliance

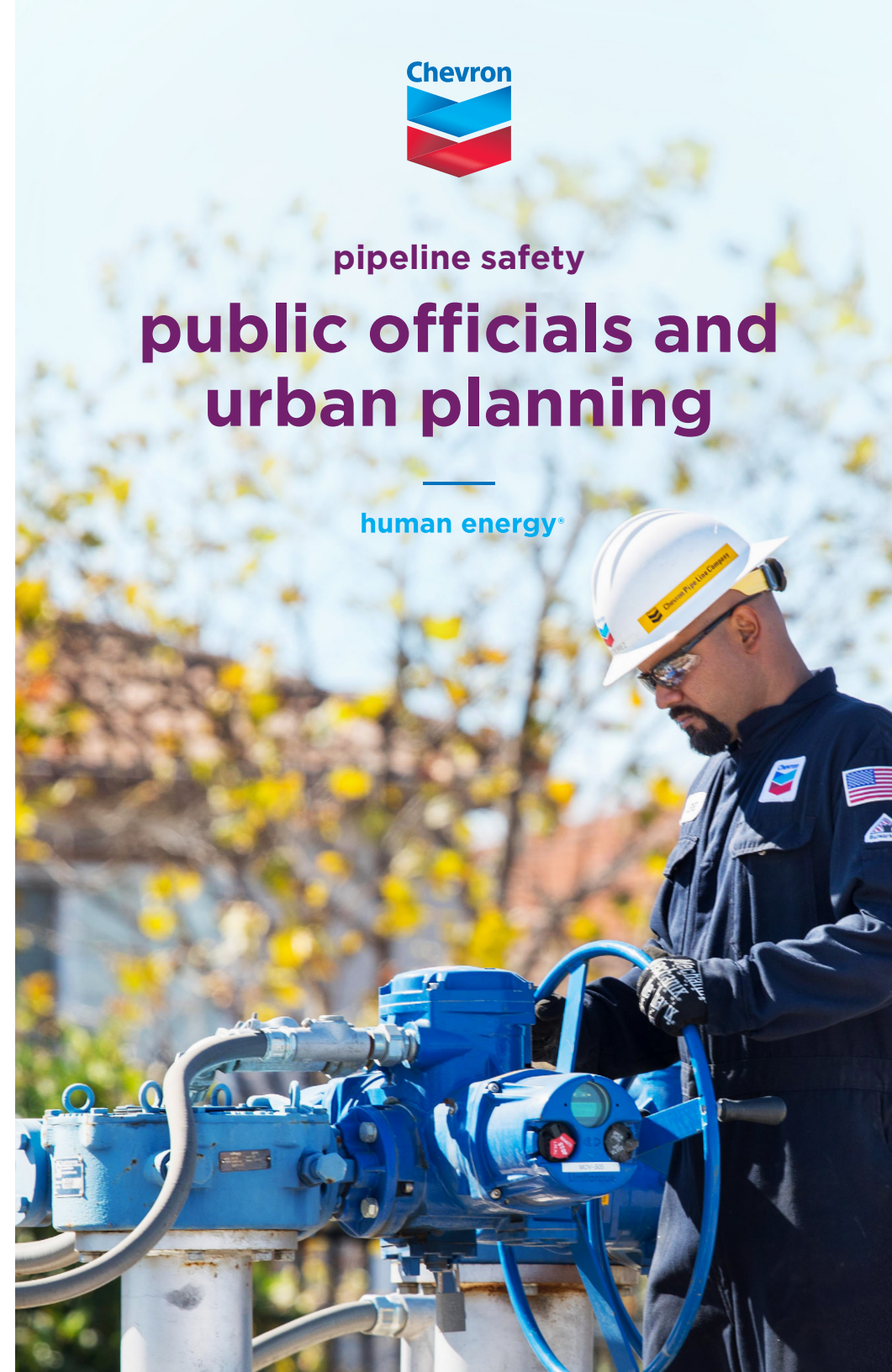
© 2018 Chevron. All rights reserved. IDC 0818-105030



pipeline safety

public officials and urban planning

human energy®



about this brochure

At Chevron Pipe Line Company, safety is a top priority in any activity we undertake. We are sending you this brochure because you are a local government official or real estate planning and development agency in a county or parish where we operate pipelines. It contains information on how we can work in partnership to ensure pipeline safety. Recognizing and respecting pipeline rights-of-way can prevent pipeline damage and avoid encroachment challenges. Please review the information, and if you have questions, contact us at (877) 596-2800 or send us an email at CPLCAO@chevron.com. Thank you for your cooperation.

about us

3,000 Miles / 7 States / 41 Counties and parishes

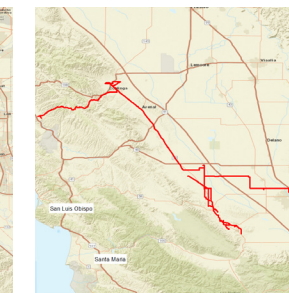
Chevron Pipe Line Company is a wholly owned subsidiary of Chevron Corporation. We operate nearly 3,000 miles of pipeline to support Chevron's operations across seven U.S. states. Our pipelines transport crude oil, refined products, highly volatile liquids, natural gas and carbon dioxide.

Learn more about Chevron Pipe Line Company at www.chevronpipeline.com

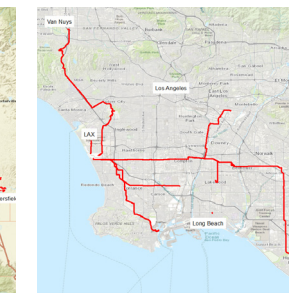
where we operate



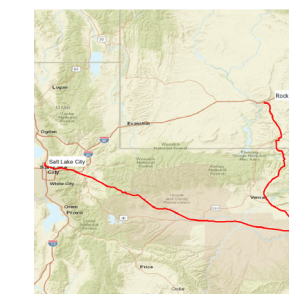
Northern California



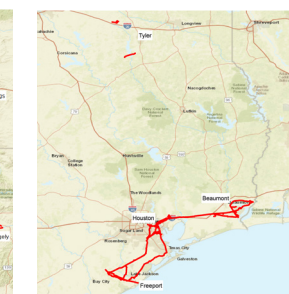
Central California



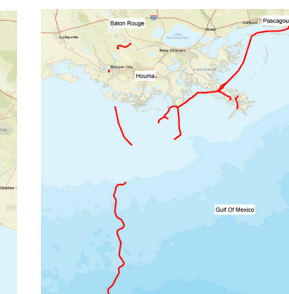
Southern California



Colorado, Utah, Wyoming



Texas



Louisiana, Mississippi

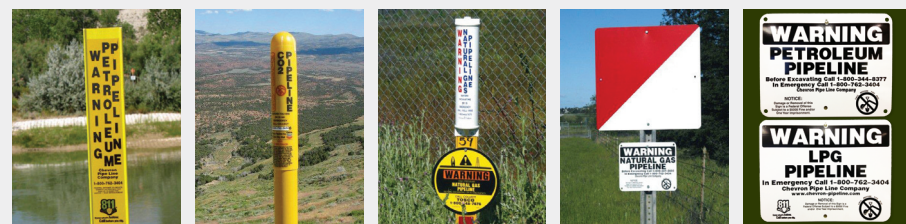
For detailed local maps and emergency response plans, go to <http://response-planning.com/ERPP/chevron>

If you have a non-emergency issue concerning Chevron Pipe Line Company and would like to speak with our representatives, please call 1-877-596-2800 or send us an email at CPLCAO@chevron.com.

guidelines for property development

To ensure public safety and to prevent unnecessary project delays, we encourage you to closely communicate with our representatives throughout any community planning or business development projects. Please consider the following:

- Check property and deed records to understand if pipelines are near your planned development. Space should be allocated to avoid the easement dimensions and to allow pipeline companies easy access to the rights-of-way.
- Above-ground pipeline markers, shown below, indicate the presence of underground pipelines in the area. Each pipeline marker provides the name of the company operating the pipelines, as well as the type of product being transported. There will also be a toll-free telephone number to call for questions or assistance.
- Survey crews and field inspections of development parcels should be aware of and recognize pipeline markers when observing the development site.
- Parcel information documents as mapped and recorded at county and title offices, along with field observations, are required for safe development planning prior to parcel zoning and space allowances being granted.
- Property administrators and developers should notify the local One-Call center by dialing 811 in the planning stages to mitigate project delays and facilitate safe completion of projects.



Pipeline markers are located above the ground, and they indicate the presence of underground petroleum and/or natural gas pipelines.

guidelines for property improvements

If you are planning improvements to existing properties where our operated pipelines are present, please contact us early in the planning phase. Contact us at 1-877-596-2800 or send us an email at CPLCAO@chevron.com. Together we can prevent encroachments by ensuring projects are designed outside the pipeline easement.

All improvements require contractors to call the local One-Call center by dialing 811 before starting excavation of any type. One-Call representatives can assist with the safety of your improvement project by identifying the utility owners that may have facilities in the area. Federal regulations (OSHA 29CFR Ch.XVII-1926.561) require excavators to notify underground utilities before the start of actual excavation. **It's the law!**

maintaining pipeline safety and integrity

Chevron Pipe Line Company invests significant resources to maintain the quality and integrity of our pipeline systems. We monitor all our active pipelines 24 hours a day from our central control center, which assesses any changes in pressure and flow and notifies field personnel if there is a possibility of a leak. We also perform aerial and ground surveillance to identify any potential dangers.

For areas designated as “high-consequence areas” (HCAs), we have developed a supplemental hazard and assessment program known as an Integrity Management Program (IMP). Required by the Code of Federal Regulations, 49 CFR part 192 and 49 CFR part 195, Chevron Pipe Line Company’s IMP addresses how we will assess and repair pipelines that have the potential to affect HCAs. These include areas that are highly populated, in environmentally sensitive areas, or in or near navigable waterways. You can obtain more information regarding Chevron Pipe Line Company’s IMP for pipelines operating in your area by contacting the DOT specialist at: Chevron Pipe Line Company, 1400 Smith Street, Houston, TX 77002.

one-call centers

Pipeline damage during excavation with digging equipment is a significant cause of pipeline accidents, injuries and related property damage. Public utilities and pipeline companies have established a nationwide network, known as the One-Call system, to notify utility companies of any plans to dig near pipelines or near the rights-of-way corridors. Use of the One-Call system by excavators is mandated by law in order to prevent pipeline damage caused by excavation equipment.

Real estate developers and community planning agencies are obligated to require all construction and excavation contractors to call the local One-Call center by dialing 811 for their property development projects. Calls are required a minimum of 48 hours before starting excavation; however, this timing requirement varies from state to state.

The One-Call center will notify the appropriate utility companies of your planned project. They will then contact the construction firm and/or developer and arrange to mark the location of all underground pipelines and other utilities at the site.

One-call is a free service. It's the right thing to do. **It's the law!**

Call your local One-Call center by dialing 811 or visit www.call811.com



Chevron Pipe Line Company
Emergency number
1-800-762-3404

How you can find out more

Office of Pipeline Safety
<https://primis.phmsa.dot.gov/comm/>

American Petroleum Institute – Pipeline Information
www.pipeline101.com

National Association of State Fire Marshals
www.firemarshals.org

Pipeline Emergency Program
www.pipelineemergencies.com

National Pipeline Mapping System
www.npms.phmsa.dot.gov

rights-of-way and easement agreements

What are rights-of-way and easements?

Easement agreements between pipeline companies and landowners define the corridor to exist on the landowner’s property, known as the “rights-of-way.” Governmental authorities grant utility companies the rights to transport products underground across many parcels as a public service along these rights-of-way.

County and local government responsibilities

Third-party pipeline damage (e.g. excavation, digging, drilling) is a significant cause of pipeline leaks. Please help us to keep your community safe by ensuring landowners and developers are aware of our pipelines and their responsibilities. Here’s how you can help:

- **County and municipal assessor offices and local title companies:** You are required to attach written descriptions of easements to any property deed. Each attachment should be clearly defined in the title search describing the type of underground facility located in the rights-of-way, such as water, sewer, electrical, communication, or petroleum or natural gas pipelines, like those operated by Chevron Pipe Line Company.
- **Municipal and county building department permitting agencies:** you are required to inform landowners in writing about utility easements on a property parcel before any construction.
- **Community development agencies:** include all existing easement-defined properties when allocating space for any future development plans.
- **Planning agencies:** Chevron Pipe Line Company actively assists community planning agencies in the location and definition of underground pipelines in our operating system. We encourage you to contact us at 1-877-596-2800 for assistance.

Pipeline company responsibilities

The pipeline easement agreements typically allow pipeline companies to construct, operate, maintain, repair, modify, alter, protect, change the size of, remove, replace and access a pipeline or pipelines within its rights-of-way. Pipeline companies are typically responsible for maintaining these rights-of-way to properly perform certain surveys and patrols required by pipeline safety regulations.

Landowner responsibilities

To prevent damage to a pipeline, the law requires landowners to notify their local One-Call center by dialing 811 before performing any excavation or heavy hauling activities, so that companies with underground facilities in the area can mark their locations.

One-call is a free service. It's the right thing to do. **It's the law!**